

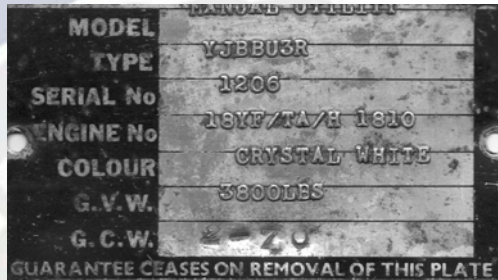
# THE BRITISH LEYLAND MOTOR CORPORATION OF AUSTRALIA (2016)



## COMMEMORATIVE CERTIFICATE



Certificate No. \_\_\_\_\_



Vehicle Identification: \_\_\_\_\_

Identifier	Symbol	Interpretation
Origin	Y	Australian manufacture
Type	JB	BMC Commercial
Model	B	½ ton (8 cwt)
Body Type	U	Utility (Pick up)
Series	Numeric	3
Drive	R	RHD
Serial No.	1206	Commencing at 501

Power Unit: \_\_\_\_\_

Identifier	Symbol	Interpretation
Capacity	18	1798cc
Origin	Y	Australia
Power Unit Variant	F	Series F
Transmission	Ta	Manual, Standard Ratio Remote Control Floor Shift
Compression	H	High
Power Unit Sequence No.	1810	Commencing at 1001

We, the undersigned, state that in our opinion, at the time of manufacture, the vehicle to which the Australian Identification Plate shown above was affixed was an Austin 1800 MKII Utility manufactured during the period 1968 and 1970 at Zetland, NSW Australia.



**Peter J. Davis**

*Administration Manager, Product Engineering  
British Leyland Motor Corporation of Australia Ltd,  
1955-1978.*

Countersigned:  
**Tony Cripps**

[www.leylandaustralia.com.au](http://www.leylandaustralia.com.au)

# THE BRITISH LEYLAND MOTOR CORPORATION OF AUSTRALIA (2016)



& The BMC-Leyland Australia Heritage Group Inc.



## Commemorative Certificate Application Form

THE CERTIFICATE WILL BE SENT TO YOUR ADDRESS SHOWN ON YOUR PAYPAL PAYMENT FORM. PLEASE ADVISE IMMEDIATELY IF YOU WISH THE CERTIFICATE TO BE POSTED TO A DIFFERENT ADDRESS.

Vehicle Details (fill in as much as you know): **PRINT CLEARLY**

Marque: \_\_\_\_\_ (e.g. Morris, Austin, etc)

Model: \_\_\_\_\_ (e.g. Morris 1100)

Year: \_\_\_\_\_

Engine No. \_\_\_\_\_ (of presently fitted engine)

Chassis No. : \_\_\_\_\_ (as stamped in the vehicle body)

Note: In some cases it is not possible to determine if the presently fitted engine is the original one fitted at the time of manufacture. Details of the presently fitted engine will be shown on the certificate.

Items to include in your application:

1. A good photograph of the Australian Identification Plate or Compliance Plate with stamped entries on the plate being legible. **This image will be used on your certificate, so please send the best image possible: a clear face-on view suitable for reproduction on the certificate.** If your vehicle does not have an Identification or Compliance Plate (e.g. For those produced in the last 6 months of 1969), then we will issue a Certificate on the basis of your quoted Engine No. and Chassis No. above.
2. Photograph of the vehicle to assist in identification.
3. Copy of any supporting documents (owner's manual details, sales receipt, etc).
4. Acceptance of Terms and Conditions (see over)
5. Pay by Paypal. It is essential to provide your Paypal email address at the top of this form so that we can match payment with your submitted Application Form. A tax invoice/receipt will be provided. If you wish to pay by EFT or cheque, kindly email us for details. Your Paypal payment will show as being made to Fischer-Cripps Laboratories Pty Ltd which is administering the scheme.

# THE BRITISH LEYLAND MOTOR CORPORATION OF AUSTRALIA (2016)



& The BMC-Leyland Australia Heritage Group Inc.

## Commemorative Certificate Terms & Conditions



The Commemorative Certificate is issued for the purpose of enjoyment and furtherance of interest in motor vehicles made by Nuffield (Australia), The British Motor Corporation (Australia) Pty Ltd, The British Leyland Motor Corporation of Australia Ltd and Leyland Australia. The Certificate is not a legal vehicle identification document.

Every effort will be made to interpret the information that you provide in your application for inclusion on the Certificate. If we find additional information in our records about your model this will also be provided.

Certificates will be originals, individually numbered and personally signed. Each will be unframed, and rolled up in a cardboard tube, and posted with signature delivery.

As a thank-you for your purchase, you will be provided with free access to our Technical Services web site via a username and password. Limit of one username/password per certificate. This access is provided as a free gift, and such access may be terminated at any time without notice.

Funds generated from the sale of Certificates is used to recompense those who put their time into researching your vehicle, preparation of your certificate, packing, postage, web site administration and other costs such as GST and accounting expenses.

Whilst every care has been taken to ensure the correctness of the information given, The British Leyland Motor Corporation of Australia, registered under section 33(8) of the Business Names Registration Act 2011 to ABN26000551459, and the BMC-Leyland Australia Heritage Group Inc, or any of their Officers or Associates will not be held liable for any errors, omissions or consequences resulting from its use.

Kindly return this form to the address below, signed and dated, with your application form.

I accept the above terms and conditions:

Signature:

Print Name:

Date:

Scan and email form to [certificates@leylandaustralia.com.au](mailto:certificates@leylandaustralia.com.au)